

Scenario 1: Scottish Child Payment, Early Learning Payment and School Age Payment

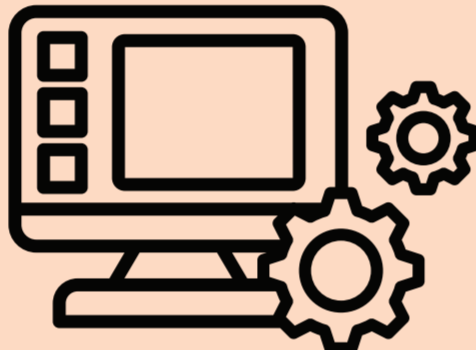
Data sharing: DWP > Social Security Scotland Type of automation: Auto-enrolment, auto-payment

Description: The Scottish Child Payment helps low-income families with children under 16. For each child they'll get £25 a week, paid every four weeks.

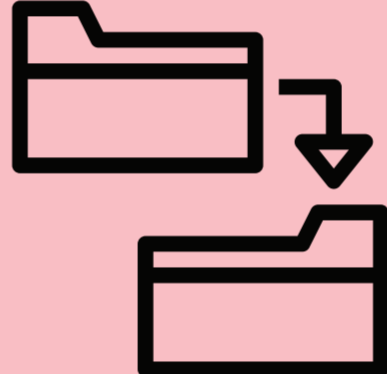
1. You apply for **SCOTTISH CHILD PAYMENT**



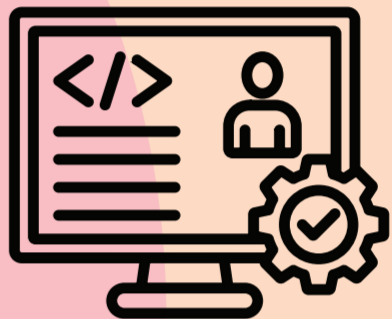
2. The computer automatically checks award criteria



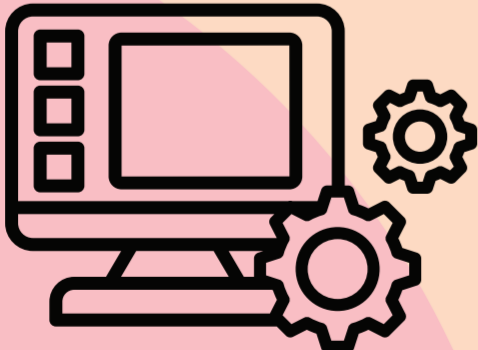
3. To check the eligibility, **data held by DWP is shared with Social Security**



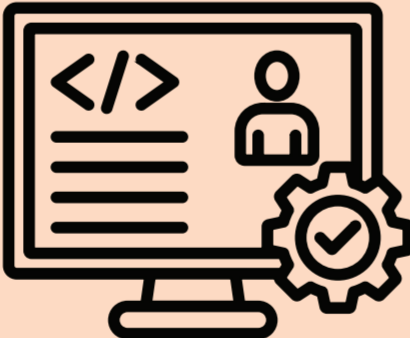
4a. If criteria are met, the award is made



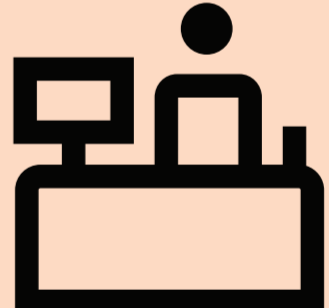
5. If you are awarded the **SCOTTISH CHILD PAYMENT**, the computer automatically checks award criteria for **BEST START EARLY LEARNING PAYMENT** and **BEST START SCHOOL AGE PAYMENT**



6a. If criteria are met, the award is made automatically unless you have opted out of automatic award



4b. If the criteria are NOT met, the case goes to case worker for manual assessment



6b. If you opted out of automatic payment or Scottish Child Payment is not currently awarded, you must make a manual application



7. Manual applications are handled by case workers

